

COMPUTER SCIENCE & ENGINEERING

ONE MARKS QUESTIONS (1-30)

- The goal of structured programming is to
 - have well indented programs
 - be able to infer the flow of control from the compiled code
 - be able to infer the flow of control from the program text
 - avoid the use of GOTO statements
- Consider the following C function


```
void swap (int a, int b)
{
    int temp;
    temp = a;
    a = b;
    b = temp;
}
```

In order to exchange the values of two variables x and y,

 - call swap (x, y)
 - call swap (&x, &y)
 - swap (x, y) cannot be used as it does not return any value
 - swap (x, y) cannot be used as the parameters are passed by value
- A single array A[1..MAXSIZE] is used to implement two stacks. The two stacks grow from opposite ends of the array. Variables top1 and top2 (top1 < top2) point to the location of the topmost element in each of the stacks. If the space is to be used efficiently, the condition for "stack full" is
 - (top1 = MAXSIZE/2) and (top2 = MAXSIZE/2+1)
 - top1 + top2 > MAXSIZE
 - (top1 = MAXSIZE/2) or (top2 > MAXSIZE)
 - top1 = top2-1
- The following numbers are inserted into an empty binary search tree in the given order: 10, 1, 3, 5, 15, 12, 16. What is the height of the binary search tree (the height the maximum distance of a leaf node from the root)?
 - 2
 - 3
 - 4
 - 6
- The best data structure to check whether an arithmetic expression has balanced parentheses is a
 - queue
 - stack
 - tree
 - list
- Level order traversal of a rooted tree can be done by starting from the root and performing
 - preorder traversal
 - inorder traversal
 - depth first search
 - breadth first search
- Given the following input (4322, 1334, 1471, 9679, 1989, 6171, 6173, 4199) and the hash function $x \bmod 10$, which of the following statements are true?
 - 9679, 1989, 4199 hash to the same value
 - 1471, 6171 hash to the same value
 - All elements hash to the same value
 - Each element hashes to a different value
 - 1 only
 - 2 only
 - 1 and 2 only
 - 3 or 4
- Which of the following grammar rules violate the requirements of an operator grammar? P, Q, R? are non terminals, and r, s, t are terminals.
 - $P \rightarrow QR$
 - $P \rightarrow QsR$
 - $P \rightarrow \epsilon$
 - $P \rightarrow QtRr$
 - (i) only
 - (i) and (iii) only
 - (ii) and (iii) only
 - (iii) and (iv) only

9. Consider a program P that consists of two source modules M_1 and M_2 contained in two different files. If M_1 contains a reference to a function defined in M_2 , the reference will be resolved at
- Edit-time
 - Compile-time
 - Link-time
 - Load-time
10. Consider the grammar rule $E \rightarrow E_1 - E_2$ for arithmetic expressions. The code generated is targeted to a CPU having a single user register. The subtraction operation requires the first operand to be in the register. If E_1 and E_2 do not have any common sub expression, in order to get the shortest possible code
- E_1 should be evaluated first
 - E_2 should be evaluated first
 - Evaluation of E_1 and E_2 should necessarily be interleaved
 - Order of evaluation of E_1 and E_2 is of no consequence
11. Consider the following statements with respect to user-level threads and kernel-supported threads.
- Context switch is faster with kernel-supported threads
 - For user-level threads, a system call can block the entire process
 - Kernel-supported threads can be scheduled independently
 - User-level threads are transparent to the kernel
- Which of the above statements are true?
- 2, 3 and 4 only
 - 2 and 3 only
 - 1 and 3 only
 - 1 and 2 only
12. Consider an operating system capable of loading and executing a single sequential user process at a time. The disk head scheduling algorithm used is First Come First Served (FCFS). If FCFS is replaced by Shortest Seek Time First (SSTF), claimed by the vendor to give 50% better benchmark results, what is the expected improvement in the I/O performance of user programs?
- 50%
 - 40%
 - 25%
 - 0%
13. Let $R_1(\underline{A}, B, C)$ and $R_2(\underline{D}, E)$ be two relation schema, where the primary keys are shown underlined, and let C be a foreign key in R_1 referring to R_2 . Suppose there is no violation of the above referential integrity constraint in the corresponding relation instances r_1 and r_2 . Which one of the following relational algebra expressions would necessarily produce an empty relation?
- $\Pi_D(r_2) - \Pi_C(r_1)$
 - $\Pi_C(r_1) - \Pi_D(r_2)$
 - $\Pi_D(r_1 \bowtie_{C=D} r_2)$
 - $\Pi_C(r_1 \bowtie_{C=D} r_2)$
14. Consider the following relation schema pertaining to a students database:
- Student (rollno, name, address)
- Enroll (rollno, courseno, coursename)
- where the primary keys are shown underlined. The number of tuples in the Student and Enroll tables are 120 and 8 respectively. What are the maximum and minimum number of tuples that can be present in $(\text{Student} \bowtie \text{Enroll})$, where \bowtie denotes natural join?
- 8, 8
 - 120, 8
 - 960, 8
 - 960, 120
15. Choose the best matching between Group 1 and Group 2.
- Group 1
- P: Data link layer
- Q: Network layer
- R: Transport layer
- Group 2
- Ensures reliable transport of data over a physical point-to-point link
 - Encodes/decodes data for physical transmission
 - Allows end-to-end communication between two processes

4. Routes data from one network node to the next
- P-1, Q-4, R-3
 - P-2, Q-4, R-1
 - P-2, Q-3, R-1
 - P-1, Q-3, R-2
16. Which of the following is NOT true with respect to a transparent bridge and a router?
- Both bridge and router selectively forward data packets
 - A bridge uses IP addresses while a router uses MAC addresses
 - A bridge builds up its routing table by inspecting incoming packets
 - A router can connect between a LAN and a WAN
17. The Boolean function $x'y' + xy + x'y$ is equivalent to
- $x' + y'$
 - $x + y$
 - $x + y$
 - $x' + y$
18. In an SR latch made by cross-coupling two NAND gates, if both S and R inputs are set to 0, then it will result in
- $Q=0, Q'=1$
 - $Q=1, Q'=0$
 - $Q=1, Q'=1$
 - Indeterminate states
19. If 73_x (in base-x number system) is equal to 54_y (in base-y number system), the possible values of x and y are
- 8, 16
 - 10, 12
 - 9, 13
 - 8, 11
20. Which of the following addressing modes are suitable for program relocation at run time?
- Absolute addressing
 - Based addressing
 - Relative addressing
 - Indirect addressing
- (i) and (iv)
 - (i) and (ii)
 - (ii) and (iii)
 - (i), (ii) and (iv)
21. The minimum number of page frames that must be allocated to a running process in a virtual memory environment is determined by
- the instruction set architecture
 - page size
 - physical memory size
 - number of processes in memory
22. How many 8-bit characters can be transmitted per second over a 9600 baud serial communication link using asynchronous mode of transmission with one start bit, eight data bits, two stop bits, and one parity bit?
- 600
 - 800
 - 876
 - 1200
23. Identify the correct translation into logical notation of the following assertion.
Some born in the class are taller than all the girls
- Note: taller(x, y) is true if x is taller than y.
- $(\exists x) (\text{boy}(x) \rightarrow (\forall y) (\text{girl}(y) \wedge \text{taller}(x, y)))$
 - $(\exists x) (\text{boy}(x) \wedge (\forall y) (\text{girl}(y) \wedge \text{taller}(x, y)))$
 - $(\exists x) (\text{boy}(x) \rightarrow (\forall y) (\text{girl}(y) \rightarrow \text{taller}(x, y)))$
 - $(\exists x) (\text{boy}(x) \wedge (\forall y) (\text{girl}(y) \rightarrow \text{taller}(x, y)))$
24. Consider the binary relation:
 $S = \{(x, y) \mid y = x + 1 \text{ and } x, y \in \{0, 1, 2, \dots\}\}$
- The reflexive transitive closure of S is
- $\{(x, y) \mid y \geq x \text{ and } x, y \in \{0, 1, 2, \dots\}\}$
 - $\{(x, y) \mid y \geq x \text{ and } x, y \in \{0, 1, 2, \dots\}\}$
 - $\{(x, y) \mid y < x \text{ and } x, y \in \{0, 1, 2, \dots\}\}$
 - $\{(x, y) \mid y \leq x \text{ and } x, y \in \{0, 1, 2, \dots\}\}$

TWO MARKS QUESTIONS (31-90)

25. If a fair coin is tossed four times, what is the probability that two heads and two tails will result?
- 3/8
 - 1/2
 - 5/8
 - 3/4
26. The number of different $n \times n$ symmetric matrices with each element being either 0 or 1 is: (Note: power(2, x) is same as 2^x)
- power(2, n)
 - power(2, n^2)
 - power(2, ($n^2 + n$)/2)
 - power(2, ($n^2 - n$)/2)
27. Let A, B, C, D be $n \times n$ matrices, each with non-zero determinant. If $ABCD = I$, then B^{-1} is
- $D^{-1}C^{-1}A^{-1}$
 - CDA
 - ADC
 - Does not necessarily exist
28. What is the result of evaluating the following two expressions using three-digit floating point arithmetic with rounding?
- $(113.7 - 111.2) + 7.51$
 $113.7 + (-111.2 + 7.51)$
- 9.51 and 10.0 respectively
 - 10.0 and 9.51 respectively
 - 9.51 and 9.51 respectively
 - 10.0 and 10.0 respectively
29. The tightest lower bound on the number of comparisons, in the worst case, for comparison-based sorting is of the order of
- n
 - 2
 - $n \log n$
 - $n \log^2 n$
30. The problems 3-SAT and 2-SAT are
- both in P
 - both NP-complete
 - NP-complete and in P respectively
 - undecidable and NP-complete respectively

31. Consider the following C function:

```
int f(int n)
{
    static int i = 1;
    if (n >= 5) return n;
    n = n + i;
    i++;
    return f(n);
}
```

The value returned by $f(1)$ is

- 5
 - 6
 - 7
 - 8
32. Consider the following program fragment for reversing the digits in a given integer to obtain a new integer. Let $n = d_1d_2\dots d_m$.

```
int n, rev;
rev = 0;
while(n > 0) {
    rev = rev * 10 + n % 10;
    n = n / 10;
}
```

The loop invariant condition at the end of the j^{th} iteration is:

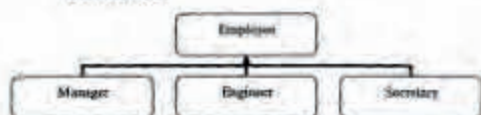
- $n = d_1d_2\dots d_{m-j}$ and $\text{rev} = d_md_{m-1}\dots d_{m-j+1}$
 - $n = d_{m-j+1}\dots d_md_m$ or $\text{rev} = d_{m-1}\dots d_2d_1$
 - $n \neq \text{rev}$
 - $n = d_1d_2\dots d_m$ or $\text{rev} = d_md_{m-1}\dots d_2d_1$
33. Consider the following C program segment:

```
char p[20];
char *s = "string";
int length = strlen(s);
for (i = 0; i < length; i++)
    p[i] = s[length - i];
printf("%s", p);
```

The output of the program is

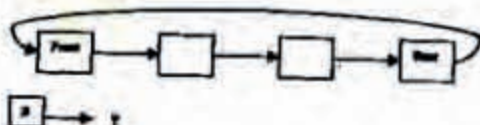
- gnirts
 - string
 - gnirt
 - No output is printed
34. It is desired to design an object-oriented employee record system for a company. Each employee has a name, unique id and salary. Employees belong to different categories and their salary is determined by their category. The functions getName, getId and computeSalary are required. Given the class hierarchy below, possible locations for these functions are:

- (i) getld is implemented in the superclass
- (ii) gerid is implemented in the subclass
- (iii) getName is an abstract function in the superclass
- (iv) getName is implemented in the superclass
- (v) getName is implemented in the subclass
- (vi) getSalary is an abstract function in the superclass
- (vii) getSalary is implemented in the superclass
- (viii) gerSalary is implemented in the subclass



Choose the best design

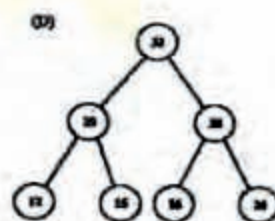
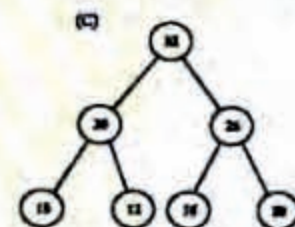
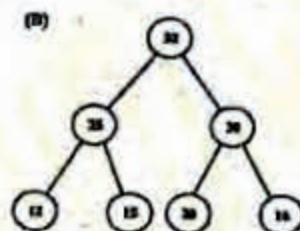
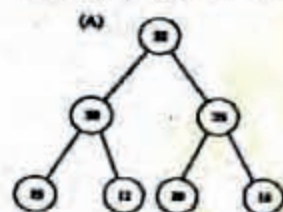
- a. (i), (iv), (vi), (viii)
 - b. (i), (iv), (vii)
 - c. (i), (iii), (v), (vi), (viii)
 - d. (ii), (v), (viii)
35. Consider the label sequences obtained by the following pairs of traversals on a labeled binary tree. Which of these pairs identify a tree uniquely?
- (i) preorder and postorder
 - (ii) inorder and postorder
 - (iii) preorder and inorder
 - (iv) level order and postorder
- a. (i) only
 - b. (ii), (iii)
 - c. (iii) only
 - d. (iv) only
36. A circularly linked list is used to represent a Queue. A single variable p is used to access the Queue. To which node should p point such that both the operations en Queue and deQueue can be performed in constant time?



- a. rear node
- b. front node

- c. not possible with a single pointer
- d. node next to front

37. The elements 32, 15, 20, 30, 12, 25, 16, are inserted one by one in the given order into a maxHeap. The resultant maxHeap is



38. Assume that the operators $+$, $-$, \times are left associative and $^$ is right associative. The order of precedence (from highest to lowest) is $^$, \times , $+$, $-$. The postfix expression corresponding to the infix expression $a + b \times c - d \wedge e \wedge f$ is
- a. $abcx + def^{\wedge}$
 - b. $abcx - de^{\wedge} f^{\wedge}$
 - c. $ab + cxd - e^{\wedge} f^{\wedge}$
 - d. $- + axbc^{\wedge} def$
39. Two matrices M_1 and M_2 are to be stored in arrays A and B respectively. Each array can be stored either in row-major or column-major order in contiguous memory locations. The time complexity of an algorithm to compute $M_1 \times M_2$ will be
- a. best if A is in row-major, and B is in column-major order

- b. best if both are in row-major order
 c. best if both are in column-major order
 d. independent of the storage scheme
40. Suppose each set is represented as a linked list with elements in arbitrary order. Which of the operations among union, intersection, membership, cardinality will be the slowest?
- a. union only
 b. intersection, membership
 c. membership, cardinality
 d. union, intersection

41. Consider the following C program

```
main ()
{
  int x, y, m, n;
  scanf ("%d %d", &x, &y);
  /* Assume x > 0 and y > 0 */
  m = x; n = y;
  while (m != n)
  {
    if (m > n)
      m = m - n;
    else
      n = n - m;
  }
  printf ("%d", n);
}
```

The program computes

- a. $x \div$ using repeated subtraction
 b. $x \bmod y$ using repeated subtraction
 c. the greatest common divisor of x and y
 d. the least common multiple of x and y
42. What does the following algorithm approximate? (Assume $m > 1$, $\epsilon > 0$).

```
x = m;
y = 1;
while (x - y >  $\epsilon$ )
{
  x = (x + y) / 2;
  y = m / x;
}
print(x);
```

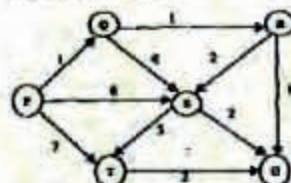
- a. $\log m$
 b. m^2
 c. $m^{1/2}$
 d. $m^{1/3}$
43. Consider the following C program segment.

```
struct CellNode {
  struct CellNode *leftChild;
  int element;
  struct CellNode *rightChild;
};

int DoSomething(struct CellNode *ptr)
{
  int value = 0;
  if (ptr != NULL)
  {
    if (ptr->leftChild != NULL)
      value = 1 + DoSomething(ptr->leftChild);
    if (ptr->rightChild != NULL)
      value = max(value, 1 + DoSomething(ptr->rightChild));
  }
  return(value);
}
```

The value returned by the function DoSomething when a pointer to the root of a non-empty tree is passed as argument is

- a. The number of leaf nodes in the tree
 b. The number of nodes in the tree
 c. The number of internal nodes in the tree
 d. The height of the tree
44. Suppose we run Dijkstra's single source shortest-path algorithm on the following edge-weighted directed graph with vertex P as the source.



In what order do the nodes get included into the set of vertices for which the shortest path distances are finalized?

- a. P, Q, R, S, T, U
 b. P, Q, R, U, S, T
 c. P, Q, R, U, T, S
 d. P, Q, T, R, U, S
45. Consider the grammar with the following translation rules and E as the start symbol.

```
E → E1 # T { E.value = E1.value * T.value }
      | T { E.value = T.value }

T → T1 & F { T.value = T1.value + F.value }
      | F { T.value = F.value }

F → num { F.value = num.value }
```

Compute E value for the root of the parse tree for the expression: $2 \# 3 \& 5 \# 6 \& 4$.

- a. 200
 b. 180
 c. 160
 d. 40
46. Consider the following set of processes, with the arrival times and the CUP-burst times given in milliseconds.

Process	Arrival Time	Burst Time
P1	0	5
P2	1	3
P3	2	3
P4	4	1

What is the average turnaround time for these processes with the preemptive

shortest remaining processing time first (SRPT) algorithm?

- a. 5.50
- b. 5.75
- c. 6.00
- d. 6.25

47. Consider a system with a two-level paging scheme in which a regular memory access takes 150 nanoseconds, and servicing a page fault takes 8 milliseconds. An average instruction takes 100 nanoseconds of CPU time, and to memory accesses. The TLB hit ratio is 90%, and the page fault rate is one in every 10,000 instructions. What is the effective average instruction execution time?

- a. 645 nanoseconds
- b. 1050 nanoseconds
- c. 1215 nanoseconds
- d. 1230 nanoseconds

48. Consider two processes P_1 and P_2 accessing the shared variables X and Y protected by two binary semaphores S_x and S_y respectively, both initialized to 1. P and V denote the usual semaphore operators, where P decrements the semaphore value, and V increments the semaphore value. The pseudo-code of P_1 and P_2 is as follows:

```

P1:
while true do {
    L1: _____
    L2: _____
    X = X + 1;
    Y = Y - 1;
    V(Sx);
    V(Sy);
}

P2:
while true do {
    L3: _____
    L4: _____
    Y = Y + 1;
    X = X - 1;
    V(Sy);
    V(Sx);
}

```

In order to avoid deadlock, the correct operators at L_1 , L_2 , L_3 and L_4 are respectively

- a. $P(S_y)$, $P(S_x)$, $P(S_x)$, $P(S_y)$
- b. $P(S_x)$, $P(S_y)$, $P(S_y)$, $P(S_x)$
- c. $P(S_x)$, $P(S_x)$, $P(S_y)$, $P(S_y)$
- d. $P(S_x)$, $P(S_y)$, $P(S_x)$, $P(S_y)$

49. A Unix-style i-node has 10 direct pointers and one single, one double and one triple indirect pointers. Disk block size is 1Kbyte, disk block address is 32 bits, and 48-bit integers are used. What is the maximum possible file size?

- a. 2^{24} bytes
- b. 2^{32} bytes

- c. 2^{34} bytes
- d. 2^{48} bytes

50. The relation scheme Student Performance (name, courseNo, rollNo, grade) has the following functional dependencies:

name, courseNo \rightarrow grade

rollNo, courseNo \rightarrow grade

name \rightarrow rollNo

rollNo \rightarrow name

The highest normal form of this relation scheme is

- a. 2NF
- b. 3NF
- c. BCNF
- d. 4NF

51. Consider the relation Student (name, sex, marks), where the primary key is shown underlined, pertaining to students in a class that has at least one boy and one girl. What does the following relational algebra expression produce? (Note: ρ is the rename operator).

$\Pi_{name}(\sigma_{sex='female'}(Student)) \bowtie \Pi_{name}(\sigma_{sex='male'}(Student))$

- a. names of girl students with the highest marks
- b. names of girl students with more marks than some boy student
- c. names of girl students with marks not less than some boy student
- d. names of girl students with more marks than all the boy students

52. The order of an internal node in a B⁺ tree index is the maximum number of children it can have. Suppose that a child pointer takes 6 bytes, the search field value takes 14 bytes, and the block size is 512 bytes. What is the order of the internal node?

- a. 24
- b. 25
- c. 26
- d. 27

53. The employee information in a company is stored in the relation Employee (name, sex, salary deptName).

Consider the following SQL query


```

select deptName
from Employee
where sex='M'
group by deptName
having avg(salary) >
(select avg(salary) from Employee)

```

It returns the names of the departments in which

- the average salary is more than the average salary in the company
- the average salary of male employees is more than the average salary of all male employees in the company
- the average salary of male employees is more than the average salary of employees in the same department
- the average salary of male employees is more than the average salary in the company

54. A and B are the only two stations on an Ethernet. Each has a steady queue of frames to send. Both A and B attempt to transmit a frame, collide, and A wins the first backoff race. At the end of this successful transmission by A, both A and B attempt to transmit and collide. The probability that A wins the second backoff race is

- 0.5
- 0.625
- 0.75
- 1.0

55. The routing table of a router is shown below.

Destination	Subnet Mask	Interface
128.75.43.0	255.255.255.0	Eth0
128.75.43.0	255.255.255.128	Eth1
192.12.17.5	255.255.255.255	Eth3
default		Eth2

On which interfaces will the router forward packets addressed to destinations 128.75.43.16 and 192.12.17.10 respectively?

- Eth1 and Eth2
- Eth0 and Eth2
- Eth0 and Eth3
- Eth1 and Eth3

The following information pertains to Q. 56-57

Consider three IP networks A, B and C. Host 1-1.4 in network A sends messages each containing 180 bytes of application data to a host Hc in

network C. The TCP layer prefixes a 20 byte header to the message. This passes through an intermediate network B. The maximum packet size, including 20 byte IP header, in each network is:

- 1000 bytes
- 100 bytes
- 1000 bytes

The networks A and B are connected through a 1 Mbps link, while B and C are connected by a 512 Kbps link (bps = bits per second).



56. Assuming that the packets are correctly delivered, how many bytes, including headers, are delivered to the IP layer at the destination for one application message, in the best case? Consider only data packets.

- 200
- 220
- 240
- 260

57. What is the rate at which application data is transferred to host Hc? Ignore errors, acknowledgements, and other overheads.

- 325.5 Kbps
- 354.5 Kbps
- 409.6 Kbps
- 512.0 Kbps

58. A circuit outputs a digit in the form of 4 bits. 0 is represented by 0000, 1 by 0001, ..., 9 by 1001. A combinational circuit is to be designed which takes these 4 bits as input and outputs 1 if the digit ≥ 5 , and 0 otherwise. If only AND, OR and NOT gates may be used, what is the minimum number of gates required?

- 2
- 3
- 4
- 5

59. Which are the essential prime implicants of the following Boolean function?

$$f(a, b, c) = a'c + ac' + b'c$$

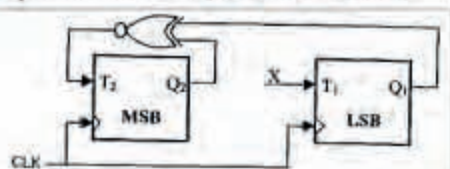
- $a'c$ and ac'
- $a'c$ and $b'c$
- $a'c$ only

d. ac' and bc'

60. Consider a multiplexer with X and Y as data inputs and Z as control input. Z=0 selects input X, and Z=1 selects input Y. What are the connections required to realize the 2-variable Boolean function $f = T + R$, without using any additional hardware?

a. R to X, 1 to Y, T to Z
 b. T to X, R to Y, T to Z
 c. T to X, R to Y, 0 to Z
 d. R to X, 0 to Y, T to Z

61. Consider the partial implementation of a 2-bit counter using T flip-flops following the sequence 0-2-3-1-0, as shown below.



To complete the circuit, the input X should be

a. Q_2'
 b. $Q_2 + Q_1$
 c. $(Q_1 \oplus Q_2)'$
 d. $Q_1 \oplus Q_2$

62. A 4-bit carry look ahead adder, which adds two 4-bit numbers, is designed using AND, OR, NOT, NAND, NOR gates only. Assuming that all the inputs are available in both complemented and uncomplemented forms and the delay of each gate is one time unit, what is the overall propagation delay of the adder? Assume that the carry network has been implemented using two-level AND-OR logic.

a. 4 time units
 b. 6 time units
 c. 10 time units
 d. 12 time units

The following information pertains to Q. 63-64

Consider the following program segment for a hypothetical CPU having three user registers R₁, R₂ and R₃.

Instruction	Operation	Instruction Size (in words)
MOV R1, 5000	$R1 \leftarrow \text{Memory}[5000]$	2
MOV R2, (R1)	$R2 \leftarrow \text{Memory}[R1]$	1
ADD R2, R3	$R2 \leftarrow R2 + R3$	1
MOV 6000, R2	$\text{Memory}[6000] \leftarrow R2$	2
HALT	Machine halts	1

63. Consider that the memory is byte addressable with word size 32 bits, and the program has been loaded starting from memory location 1000 (decimal). If an interrupt occurs while the CPU has been halted after executing the HALT instruction, the return address (in decimal) saved in the stack will be

a. 1007
 b. 1020
 c. 1024
 d. 1028

64. Let the clock cycles required for various operations be as follows:

Register to/from memory transfer: 3 clock cycles

ADD with both operands in register: 1 clock cycle

Instruction fetch and decode: 2 clock cycles per word

The total number of clock cycles required to execute the program is

a. 29
 b. 24
 c. 23
 d. 20

65. Consider a small two-way set-associative cache memory, consisting of four blocks. For choosing the block to be replaced, use the least recently used (LRU) scheme. The number of cache misses for the following sequence of block addresses is

8, 12, 0, 12, 8

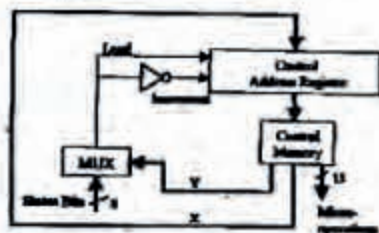
a. 2
 b. 3
 c. 4
 d. 5

66. Let A = 11111010 and B = 0000 1010 be two 8-bit 2's complement numbers. Their product in 2's complement is

a. 11000100
 b. 10011100
 c. 10100101

d. 11010101

67. The microinstructions stored in the control memory of a processor have a width of 26 bits. Each microinstruction is divided into three fields: a micro-operation field of 13 bits, a next address field (X), and a MUX select field (Y). There are 8 status bits in the inputs of the MUX.



How many bits are there in the X and Y fields, and what is the size of the control memory in number of words?

- a. 10, 3, 1024
b. 8, 5, 256
c. 5, 8, 2048
d. 10, 3, 512
68. A hard disk with a transfer rate of 10 Mbytes/second is constantly transferring data to memory using DMA. The processor runs at 600 MHz, and takes 300 and 900 clock cycles to initiate and complete DMA transfer respectively. If the size of the transfer is 20 Kbytes, what is the percentage of processor time consumed for the transfer operation?
- a. 5.0%
b. 1.0%
c. 0.5%
d. 0.1 %
69. A 4-stage pipeline has the stage delays as 150, 120, 160 and 140 nanoseconds respectively. Registers that are used between the stages have a delay of 5 nanoseconds each. Assuming constant clocking rate, the total time taken to process 1000 data items on this pipeline will be
- a. 120.4 microseconds
b. 160.5 microseconds
c. 165.5 microseconds
d. 590.0 microseconds
70. The following propositional statement is $(P \rightarrow (Q \vee R)) \rightarrow ((P \vee Q) \rightarrow R)$

- a. satisfiable but not valid
b. valid
c. a contradiction
d. none of the above

71. How many solutions does the following system of linear equations have?

$$-x + 5y = 1$$

$$x - y = 2$$

$$x = 3y - 3$$

- a. infinitely many
b. two distinct solutions
c. unique
d. none

72. The following is the incomplete operation table of a 4-element group.

e	e	a	b	c
e	e	a	b	c
a	a	b	c	e
b				
c				

The last row of the table is

- a. c a e b
b. c b a e
c. c b e a
d. c e a b

73. The inclusion of which of the following sets into

$$S = \{\{1, 2\}, \{1, 2, 3\}, \{1, 3, 5\}, \{1, 2, 4\}, \{1, 2, 3, 4, 5\}\}$$

is necessary and sufficient to make S a complete lattice under the partial order defined by set containment?

- a. $\{1\}$
b. $\{1\}, \{2, 3\}$
c. $\{1\}, \{1, 3\}$
d. $\{1\}, \{1, 3, 1, 2, 3, 4\}, \{1, 2, 3, 5\}$

74. An examination paper has 150 multiple-choice questions of one mark each, with each question having four choices. Each incorrect answer fetches -0.25 mark. Suppose 1000 students choose all (their answers randomly with uniform probability. The sum total of the expected marks obtained by all these students is

- a. 0
b. 2550
c. 7525

d. 9375

75. Mala has a colouring book in which each English letter is drawn two times. She wants to paint each of these 52 prints with one of k colours, such that the colour-pairs used to colour any two letters are different. Both prints of a letter can also be coloured with the same colour. What is the minimum value of k that satisfies this requirement?

a. 9
b. 8
c. 7
d. 6

76. In an $M \times N$ matrix such that all non-zero entries are covered in a rows and b columns. Then the maximum number of non-zero entries, such that no two are on the same row or column, is

a. $\leq a + b$
b. $\leq \max\{a, b\}$
c. $\leq \min\{M-a, N-b\}$
d. $\leq \min\{a, b\}$

77. The minimum number of colours required to colour the following graph, such that no two adjacent vertices are assigned the same colour, is



a. 2
b. 3
c. 4
d. 5

78. Two n bit binary strings, S_1 and S_2 are chosen randomly with uniform probability. The probability that the Hamming distance between these strings (the number of bit positions where the two strings differ) is equal to d is

a. ${}^nC_d/2^n$
b. ${}^nC_d/2^d$
c. $d/2^n$
d. $1/2^d$

79. How many graphs on n labeled vertices exist which have at least $(n^2 - 3n)/2$ edges?

a. $\frac{(n^2 - 2n)/2}{(n^2 - 3n)/2} C_n$

b. $\sum_{k=0}^{(n^2 - 2n)/2} C_k$

c. $\frac{(n^2 - 2n)/2}{(n^2 - 3n)/2} C_n$

d. $\sum_{k=0}^{(n^2 - 2n)/2} C_k$

80. A point is randomly selected with uniform probability in the X - Y plane within the rectangle with corners at $(0,0)$, $(1,0)$, $(1,2)$ and $(0,2)$. If p is the length of the position vector of the point, the expected value of p^2 is

a. $2/3$
b. 1
c. $4/3$
d. $5/3$

81. Let $G_1 = (V, E_1)$ and $G_2 = (V, E_2)$ be connected graphs on the same vertex set V with more than two vertices. If $G_1 \cap G_2 = (V, E_1 \cap E_2)$ is not a connected graph, then the graph $G_1 \cup G_2 = (V, E_1 \cup E_2)$

a. cannot have a cut vertex
b. must have a cycle
c. must have a cut-edge (bridge)
d. has chromatic number strictly greater than those of G_1 and G_2

82. Let $A[1, \dots, n]$ be an array storing a bit (1 or 0) at each location, and $f(m)$ is a function whose time complexity is $\Theta(m)$. Consider the following program fragment written in a C like language:

```
counter = 0;
for (i=1; i<= n; i++)
    { if (A[i]== 1) counter++;
      else {f(counter); counter = 0;}
    }
```

The complexity of this program fragment is

a. $\Omega(n^2)$
b. $\Omega(n \log n)$ and $O(n^2)$
c. $\Theta(n)$
d. $O(n)$

83. The time complexity of the following C function is (assume $a > 0$)


```

int recursive(int n) {
    if (n == 1)
        return(1);
    else
        return(recursive(n-1) + recursive(n-2));
}

```

- a. $O(n)$
- b. $O(n \log n)$
- c. $O(n^2)$
- d. $O(2^n)$

84. The recurrence equation

$$T(1) = 1$$

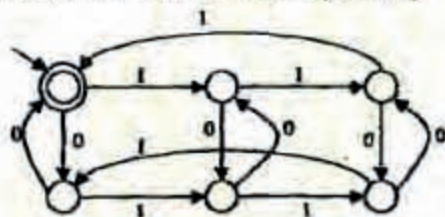
$$T(n) = 2T(n-1) + n, n \geq 2 \text{ evaluates to}$$

- a. $2^{n+1} - n - 2$
- b. $2^n - n$
- c. $2^{n+1} - 2n - 2$
- d. $2^n + n$

85. A program takes as input a balanced binary search tree with a leaf nodes and computes the value of a function $g(x)$ for each node x . If the cost of computing $g(x)$ is $\min\{\text{no. of leaf-nodes in left-subtree of } x, \text{ no. of leaf-nodes in right-subtree of } x\}$ then the worst-case time complexity of the program is

- a. $\Theta(n)$
- b. $\Theta(n \log n)$
- c. $\Theta(n^2)$
- d. $\Theta(n^2 \log n)$

86. The following finite state machine accepts all those binary strings in which the number of 1's and 0's are respectively



- a. divisible by 3 and 2
- b. odd and even
- c. even and odd
- d. divisible by 2 and 3

87. The language $\{a^m b^n c^{m+n} \mid m, n \geq 1\}$ is

- a. regular
- b. context-free but not regular
- c. context sensitive but not context free
- d. type-0 but not context sensitive

88. Consider the following grammar G:

$$S \rightarrow bS \mid aA \mid b$$

$$A \rightarrow bA \mid aB$$

$$B \rightarrow bB \mid aS \mid a$$

Let $N_a(w)$ and $N_b(w)$ denote the number of a's and b's in a string w respectively. The language $L(G) \subseteq \{a, b\}^*$ generated by G is

- a. $\{w \mid N_a(w) \geq 3N_b(w)\}$
- b. $\{w \mid N_b(w) \geq 3N_a(w)\}$
- c. $\{w \mid N_a(w) = 3k, k \in \{0, 1, 2, \dots\}\}$
- d. $\{w \mid N_b(w) = 3k, k \in \{0, 1, 2, \dots\}\}$

89. L_1 is a recursively enumerable language over Σ . An algorithm A effectively enumerates its words as w_1, w_2, w_3 . Define another language L_2 over $\Sigma \cup \{\#\}$ as $\{w_i \# w_j \mid w_i, w_j \in L_1, i < j\}$. Here $\#$ is a new symbol. Consider the following assertions:

S_1 : L_1 is recursive implies L_2 is recursive

S_2 : L_2 is recursive implies L_1 is recursive

Which of the following statements is true?

- a. Both S_1 and S_2 are true
- b. S_1 is true but S_2 is not necessarily true
- c. S_2 is true but S_1 is not necessarily true
- d. Neither is necessarily true

90. Choose the best matching between the programming styles in Group 1 and their characteristics in Group 2.

Group 1

P. Functional

Q. Logic

R. Object-oriented

S. Imperative

Group 2

1. Command-based, procedural

2. Imperative, abstract data types

3. Side-effect free, declarative, expression evaluation

4. Declarative, clausal representation, theorem proving

a. P-2, Q-3, R-4, S-1

b. P-4, Q-3, R-2, S-1

c. P-3, Q-4, R-1, S-2

d. P-3, Q-4, R-2, S-1